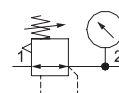


- High flow with a wide range of adjustable output pressure ranges
- Flows in excess of 7000 l/min
- Maintains constant downstream pressure even during fluctuations in upstream pressure
- Optional extended temperature range of -40°C to +80°C
- Optional low profile integrated gauge, round gauge, digital gauge or digital pressure switch
- Key lockable and tamper resistant options
- Threaded ports allow for individual or modular mounting



Performance Data			
Series		<b>651</b>	<b>652</b>
Port sizes		1/8, 1/4	1/4, 3/8, 1/2
Thread type		G (NPTF in option)	
		l/min (ANR)	
Nominal flow - ISO 6358 P1 = 10 bar Setpoint P2 = 6,3 bar ΔP = 1 bar	1/8	800	-
	1/4	2060	4120
	3/8	-	6530
	1/2	-	7000
Maximum inlet pressure (bar) P1		16	
Adjustable pressure ranges (bar) P2		0,2 to 3	
		0,5 to 10	
Hysteresis (bar)		0,3	0,2
Ambient temperature range (°C)		-20 to +50	
Fluid temperature range (°C)		-20 to +50	
Fluid		air or inert gas	
Weight (kg)		0,215	0,431

Materials in contact with fluid	
Body	Aluminium
Body covers	Polyamide
Seals	NBR
Springs	Stainless steel

**HOW TO ORDER**

**Regulator**

**G 651 A R 0 0 2 G A00 H 0**

[Configurator - CAD Files](#)

**Thread connection**  
G = ISO 228/1-G\*  
8 = NPTF

**Product series**  
651  
652

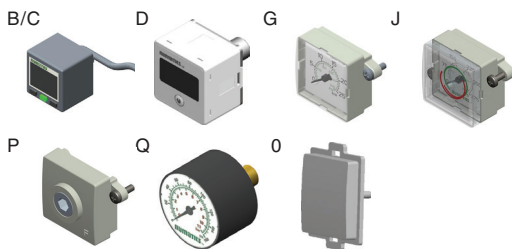
**Revision letter**  
A

**Product type**  
K = Regulator "Quick Relief Option"  
R = Regulator\*\*  
W = Pilot Operated Regulator



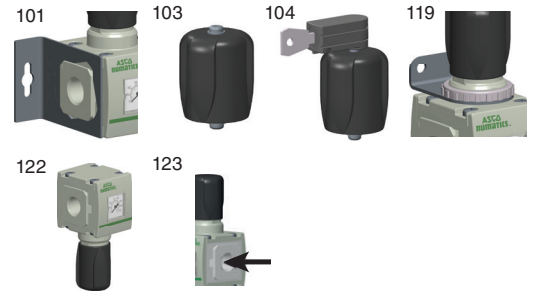
**Port size**  
1 = 1/8 (651 Series)  
2 = 1/4 (651 or 652 Series)  
3 = 3/8 (652 Series)  
4 = 1/2 (652 Series)

**Gauge type**  
B = Digital pressure switch - PNP  
C = Digital pressure switch - NPN  
D = Digital gauge  
G = Low profile integrated gauge bar/PSI  
J = Low profile integrated gauge bar/PSI with pressure range indicators  
Q = Round gauge bar/PSI  
0 = No gauge port  
P = Port Plate Rc 1/8



**Pressure range**  
D = 0,2..3 bar  
H = 0,5..10 bar

**Options\*\*\*\***  
A00 = Without option  
101 = Side Mounting Brackets  
102 = Panel Nut  
103 = Tamper resistant  
104 = Key lockable  
105 = High temperature (+80°C)  
106 = Low temperature (-40°C)\*\*\*  
109 = FPM seals  
113 = Stainless steel fasteners  
114 = Provision for key lock  
117 = ATEX zones 1-21   
119 = Panel Bracket with Panel Nut  
121 = Non-relieving  
122 = Bottom oriented pressure adjustment  
123 = Gauge type mounted for right-to-left flow  
202 = 105 + 109  
2A9 = 105 + 106



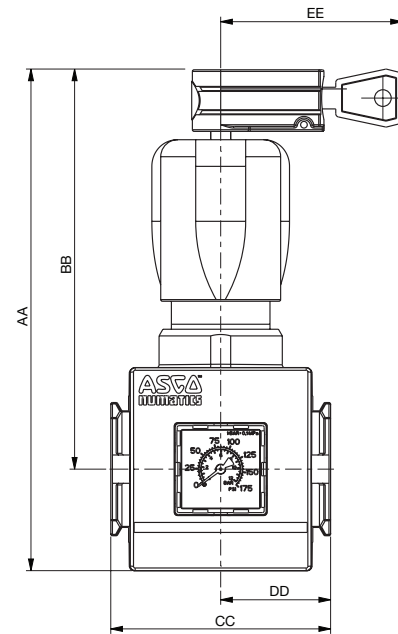
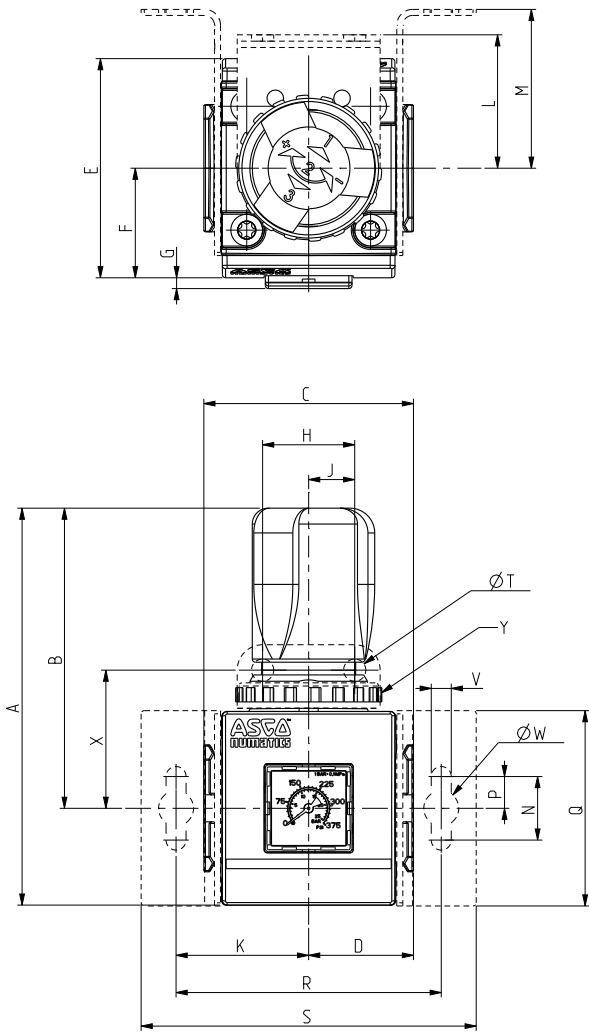
01803GB-2016/R01  
Availability, design and specifications are subject to change without notice. All rights reserved.

\* Conforms to ISO standards 1179-1.  
\*\* Relieving standard; use option 121 for non-relieving  
\*\*\* Compressed air must be dry enough so no ice formation is present on the product.  
\*\*\*\* [If multiple options are required, please use the on-line CAD configurator on the website to generate the part number \(www.asco.com\).](#)

Dimensions: mm

Dimensional Drawing - 651/652 Series Regulator

[Configurator - CAD Files](#)



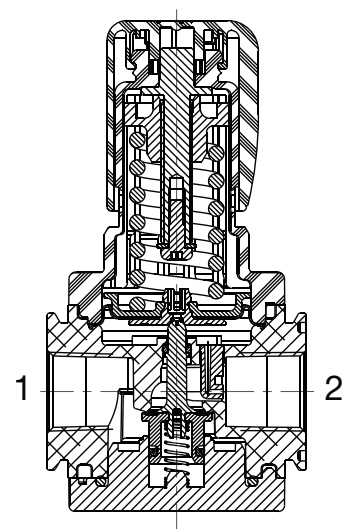
Series	AA	BB	CC	DD	EE
651	121,5	96	50	25	54,6
652	151	120	66	33	55

Cross Section - 651/652 Series Regulator

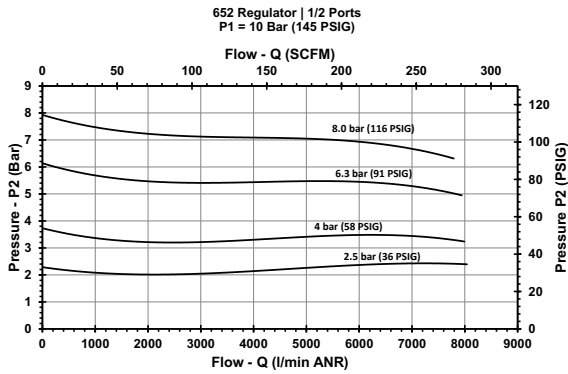
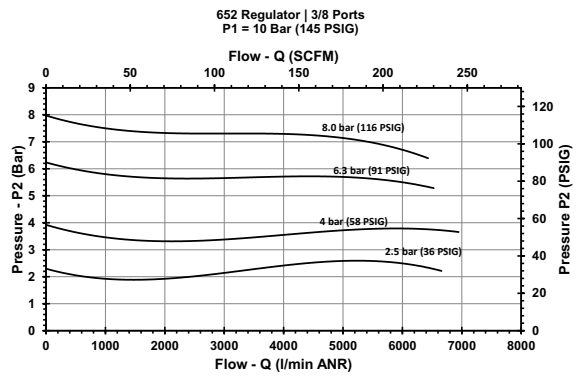
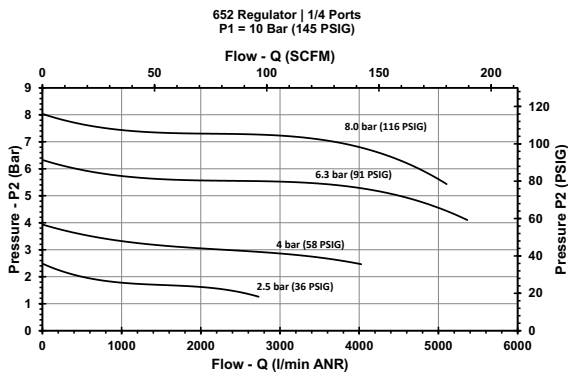
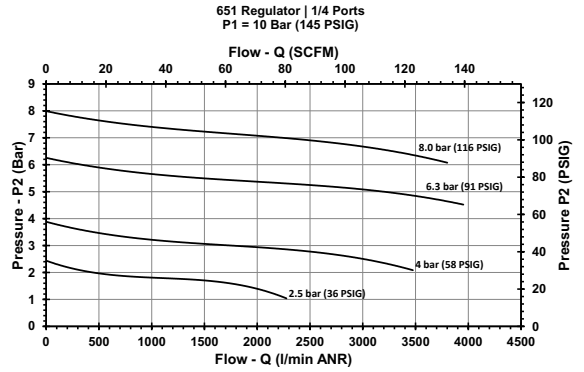
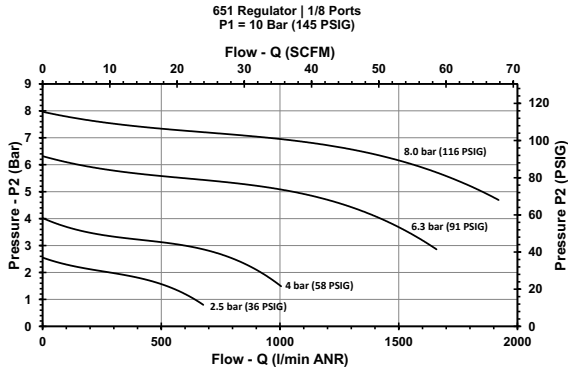
Series	A	B	C	D	E	F	G	H	J	K	L
651	103	77,5	50	25	58	29	3,4	29	14,5	35	42
652	125	94,5	66	33	69	34,5	2,5	29	14,5	41,75	42

Series	M	N	P	Q	R	S	ØT	V	ØW	X	Y
651	44,5	20	10	50	70	92	7	6,3	11	39,1	M30 x 2
652	50	20	10	61,5	83,5	105,5	7	6,3	11	43,5	M37 x 2



**Regulator Flow Charts**



01803GB-2016/R01  
Availability, design and specifications are subject to change without notice. All rights reserved.